

**Third CRS-Vatican Conference on Impact Investing –
*Scaling Investment in Service of Integral Human Development***

Migrants and Refugees - Catalyzing Entrepreneurship: Kiva's World Refugee Fund and KOIS' Livelihoods Development Impact Bond

Mr. John Kluge, Alight Fund

Mr. Lev Plaves, Kiva

Ms. Béatrice Delperdange, KOIS Invest

- ADRIANO -



kiva

TOSHIBA



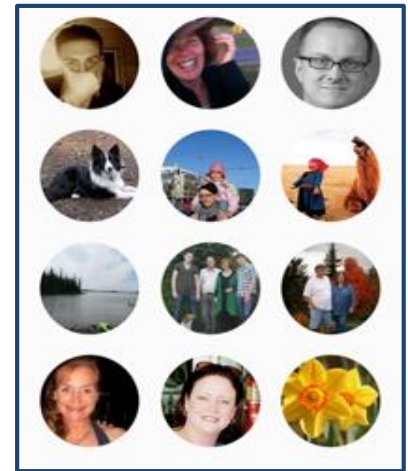
kiva



KIVA'S WORLD REFUGEE FUND

Institutional matching doubles the impact of the crowd

Internet Lenders



8% funded


30 days left

\$1,375 to go

Total loan: \$1,500


Powered by 4 lenders

Dalia

 Tayouneh, Lebanon / Food Production/Sales

\$25 ▾

Lend now

 Matching by USA for UNHCR

**Third CRS-Vatican Conference on Impact Investing –
*Scaling Investment in Service of Integral Human Development***

Migrants and Refugees - Catalyzing Entrepreneurship: Kiva's World Refugee Fund and KOIS' Livelihoods Development Impact Bond

Mr. John Kluge, Alight Fund

Mr. Lev Plaves, Kiva

Ms. Béatrice Delperdange, KOIS Invest

- ADRIANO -



**A Development Impact Bond
to fund livelihood interventions for Syrian refugees and
vulnerable populations in host countries**

July 2018



Problem statement

 **1/4**

of the 25.4 Mn refugees worldwide are Syrian

 **80%**

of all Syrian refugees are hosted by Jordan, Lebanon & Turkey, creating strong pressure on local populations already struggling to meet basic needs

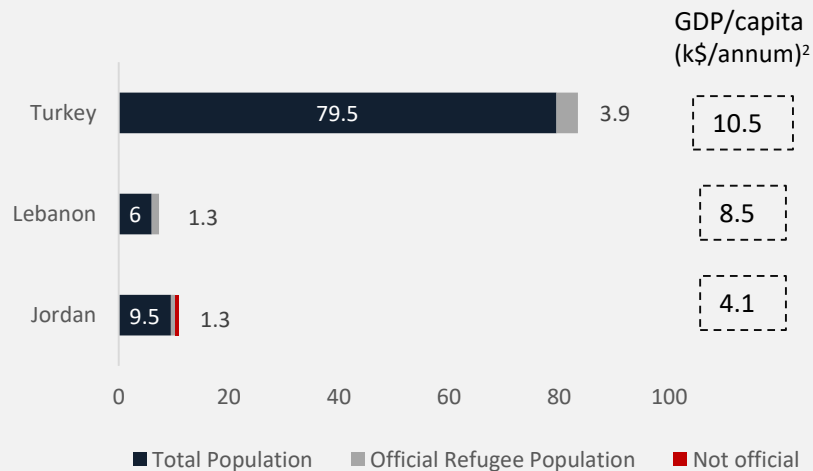
 **10 years**

Expected displacement duration of Syrian refugees

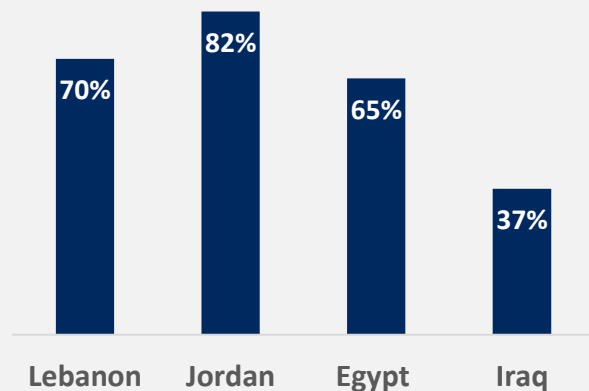


Livelihood opportunity programmes are critical to build resilience but suffer from massive underinvestment

Refugee population in main host countries (Mn)¹



% of Syrian refugee households living under the national poverty line in host countries (2016)



¹ Sources: World Bank; Urda; European Commission; UNHCR; UNDP

² Source: World Bank, 2017

A DIB to catalyse the scale-up of refugee livelihood programmes in Jordan and Lebanon

Aim:

- **Improve livelihoods** for vulnerable populations fragilized by the Syrian conflict
- **Reduce the economic and social burden on host countries**, thereby **preventing risk of secondary conflicts**
- **Improve self-sustainability prospects for future Syrian returnees**
- **High visibility proof of concept to help mobilise international funding** for refugee livelihood programmes in fragile countries

Interventions:

- **Employability:** Soft skills training, technical and vocational training, on-the-job training and apprenticeships, job counselling and job search assistance and matching
- **Entrepreneurship:** Business training, access to finance, coaching/mentoring, market linkage & business development services

Beneficiaries:



Balance between Syrian refugees and local population

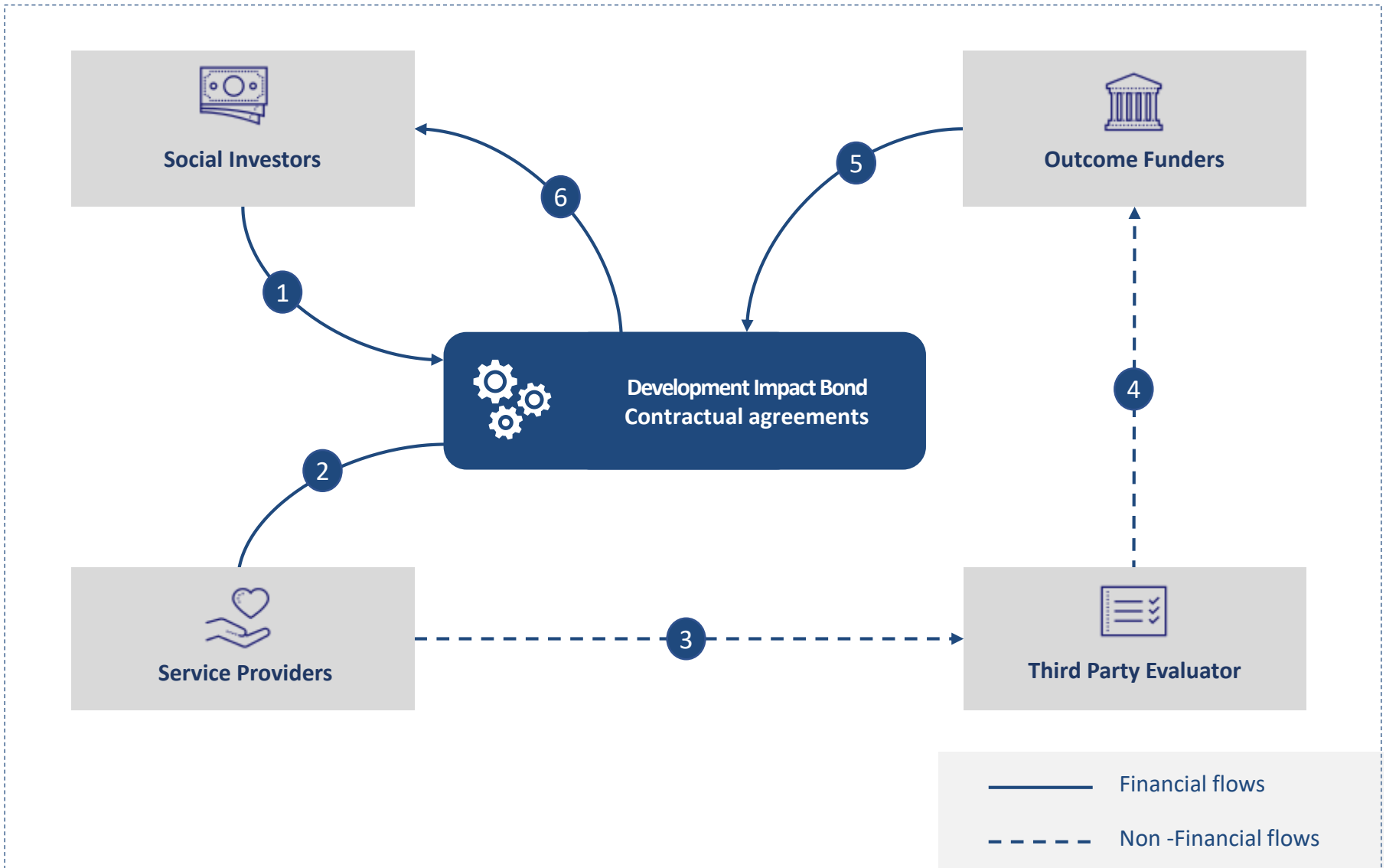


Up to 85% women beneficiaries

Target direct impact of first tranche (entrepreneurship):

- ✓ 5,586 beneficiaries and creation of 4.190 sustainable businesses
- ✓ \$ 1,251 average increase in entrepreneurs' monthly income

DIB mechanism



**Third CRS-Vatican Conference on Impact Investing –
*Scaling Investment in Service of Integral Human Development***

Migrants and Refugees - Catalyzing Entrepreneurship: Kiva's World Refugee Fund and KOIS' Livelihoods Development Impact Bond

Mr. John Kluge, Alight Fund

Mr. Lev Plaves, Kiva

Ms. Béatrice Delperdange, KOIS Invest

- ADRIANO -